



## Interior Features

- Spacious 1 and 2 bedroom apartments
- Large Kitchens
- Over-sized Closets
- Fireplace\*
- Patios / Balconies
- Outside Storage\*
- Custom Paint
- Full-Sized Washer / Dryer Connections\*
- Designer Black / White Appliances
- Faux-Wood Flooring
- Pre-Wired for Intrusion Alarms
- Vaulted Ceilings\*

\*In Select Apartment Homes

## Community Amenities

- Just Minutes to shopping and dining
- Sparkling Swimming Pool
- Professional and Attentive Staff
- Scheduled Community Events
- Attractive Landscaped
- Courtyards
- Laundry Facility
- 24-Hour Emergency Maintenance



# Ask about our Move-in Special!

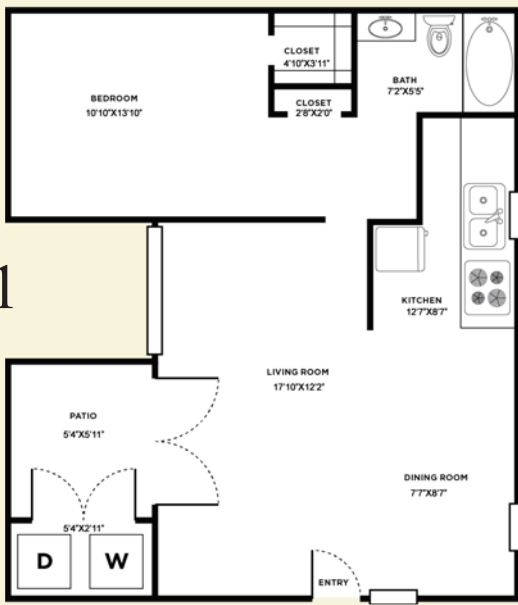
Professionally Managed by



[plummeadow.com](http://plummeadow.com)

**6910 S. Cockrell Hill Rd.  
Dallas, Texas 75236  
(972) 780-1718**

A1

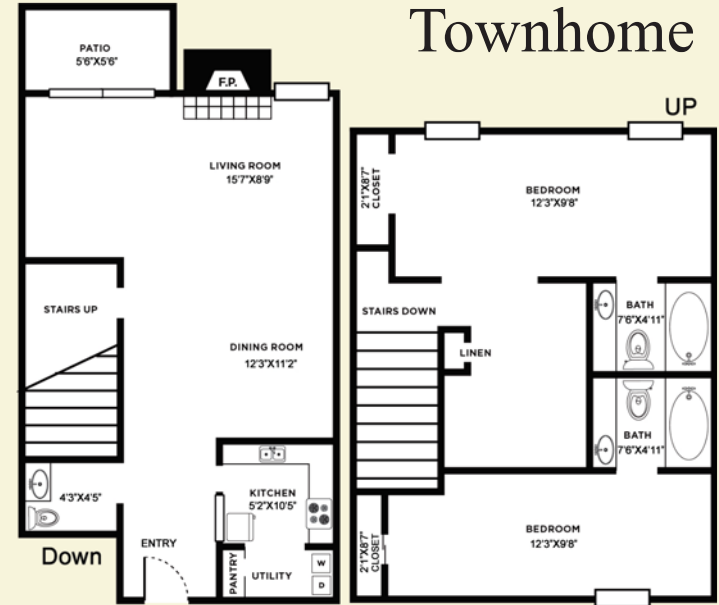


RENT \_\_\_\_\_  
DEPOSIT \_\_\_\_\_

1 Bdrm / 1 Bath  
667 Sq. Ft.\*

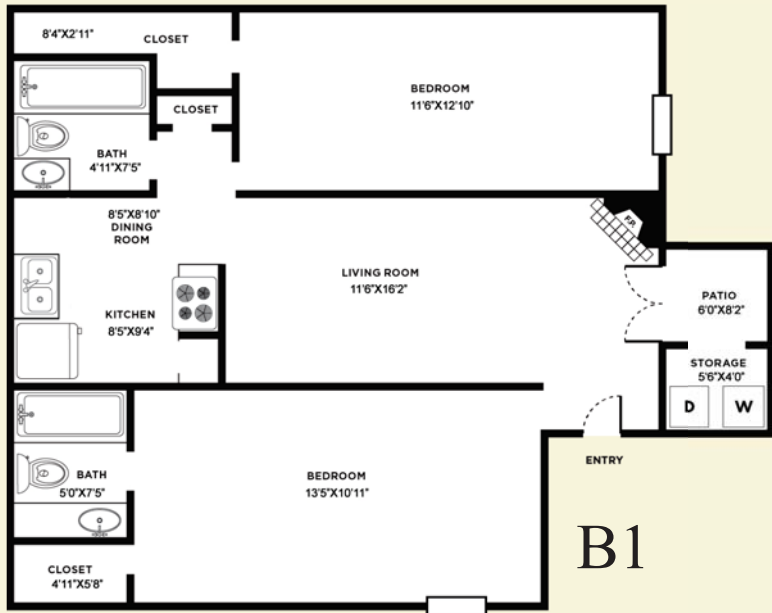


# Townhome



RENT \_\_\_\_\_  
DEPOSIT \_\_\_\_\_

2 Bdrm / 2 Bath  
1,098 Sq. Ft.\*



B1

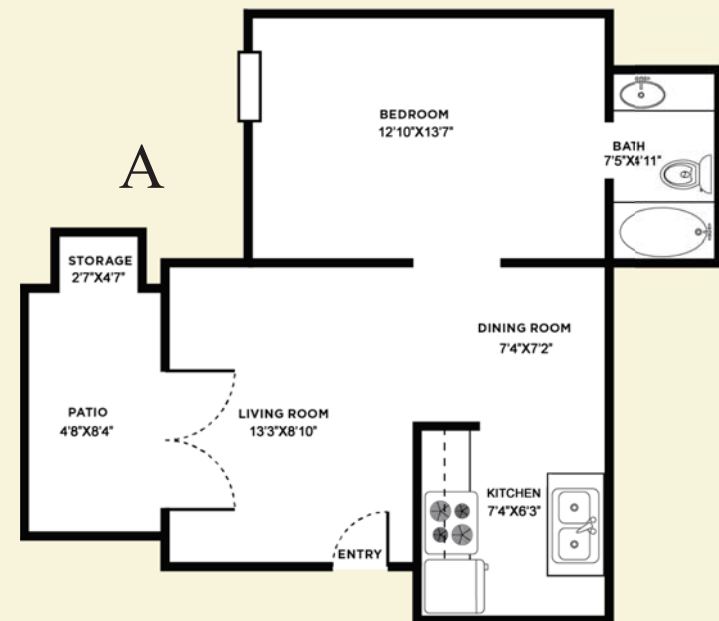
RENT \_\_\_\_\_  
DEPOSIT \_\_\_\_\_

2 Bdrm / 2 Bath  
950 Sq. Ft.\*



6910 S. Cockrell Hill Rd.  
Dallas, Texas 75236  
**(972) 780-1718**

\* All Square Footage is Approximate Only.



RENT \_\_\_\_\_  
DEPOSIT \_\_\_\_\_

1 Bdrm / 1 Bath  
Sq. Ft.\*